

D-LITE RX

FAMILY

WHY D-LITE RX 2/4?

- 200 and 400 Ws units offer greater versatility.
- Faster recycling for faster work.
- Large rubberised rugged handle for easy use of larger accessories.



D-Lite RX 4 — 400 Ws — N° 20487.1



D-Lite RX 2 — 200 Ws — N° 20486.1

FEATURES

- Unique to the whole Elinchrom system, the EL-Skyport delivers the most comprehensive synchronisation and control.
- Accurate exposure control provides precision lighting at your command.
- Fast and informative recycling, the D-Lite RX series is ready when you are.
- Automatic voltage detection permits use wherever you need to travel.
- An intelligent built-in fan delivers cool and quiet running.
- The controllable modelling lighting illustrates your flash and can be used also as a continuous light source.
- Versatile, the pre-flash detector system provides perfect synchronisation with speedlights.
- Integrates fully into the Elinchrom flash and accessory system.

SPECIFICATIONS

TECHNICAL DATA

Energy Ws/J

This is the energy that creates the flash, a typical speedlight delivers max. 40 Ws. 100 Ws offers enough for working at wider apertures or higher ISO. With more power smaller apertures like f/11 are accessible and bigger subjects such as groups of people can be photographed.

Guide Number

This is the working aperture (f-stop) available at 100 ISO, using our 48 degree reflector at 1m. The higher this number, the more light is available.

Power Range

This is the range of working power available. The power can be precisely adjusted in 1/10ths stop.

Flash Duration

This is the freezing capability of the flash using the standard camera sync shutter speed. Shorter is sharper!

Recycling time using 230v / 115v

This is your speed of working and your ability to capture those in-between shots.

Colour Temperature

A very good measure of the quality of your colour rendition.

Auto Power Dumping and Power Stability

Reduces the power automatically when you adjust power down and maintains the most accurate exposure consistency.

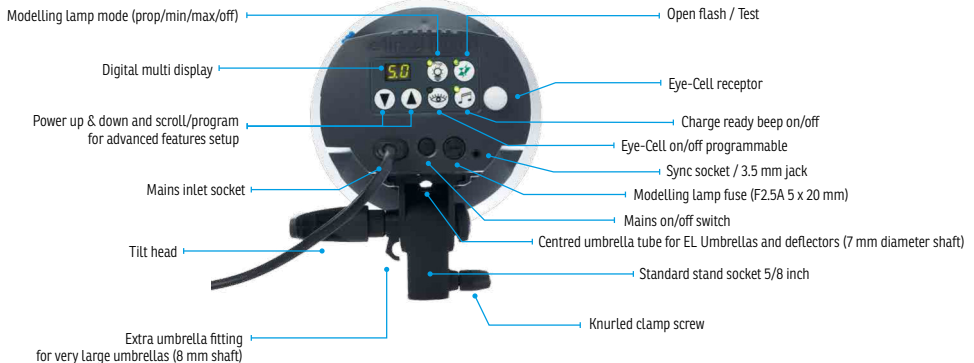
Voltage Range

Enables you to work anywhere in the World.

| | D-LITE RX ONE | D-LITE RX 2 | D-LITE RX 4 |
|---|-------------------------|----------------|----------------|
| Energy (Ws/J) | 100 | 200 | 400 |
| F-Stop (1 m, 100 ISO, reflector 48°) | 32.4 | 45.3 | 64.3 |
| Power range | 1/16 - 1/1 | | |
| Flash duration t0.5 at max. power in s. | 1/2200 | 1/1200 | 1/800 |
| Recycling 230 V in s. | 0.44 - 1.5 | 0.2 - 0.6 | 0.35 - 1.2 |
| Recycling 115 V in s. | 0.45 - 2.1 | 0.2 - 0.8 | 0.35 - 1.6 |
| Colour temperature in °K at max. power | 5500 (Normal Daylight) | | |
| Power stability | ± 0.5% | | |
| Voltage | Multivoltage 90 - 260 V | | |

CONTROL PANEL

D-Lite RX ONE



| D-LITE RX ONE | D-LITE RX 2 | D-LITE RX 4 |
|------------------|----------------|----------------|
|------------------|----------------|----------------|

Modelling Lamp Options

Proportional tracks the brightness of the flash for easy lighting set-up, Min for cool running, Max for easiest focusing, and Off.

Flashtube

High performance, long life, and easily exchanged if accidentally broken.

EL Skyport (Built-in)

Remotely trigger your flash units from your camera. Supports Free PC and Mac software for full studio remote control via the optional Skyport USB. Simplifies the setting up of lights with a flash meter.

Sync voltage

The lowest voltage for greater security, and a standard sync lead connector when required.

Max. power consumption

This is important when you would like to work away from mains power. These units are ideally suited for use with pure sine wave power inverters.

Dimensions / Weight

Small, robust and perfectly portable.

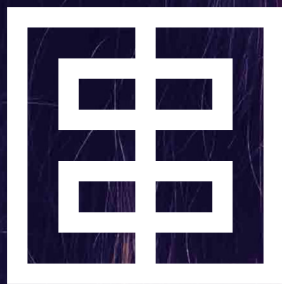
Code Number

Supplied with 5 m mains cable, sync cable, flashtube, modelling lamp, protective cap and 2 year National warranty.

| | | |
|---|---|-----------------------------------|
| Modelling Lamp mode | Proportional, min, max, off | |
| Flashtube | n° 24009: Plug-in, user replaceable | |
| EL-Skyport (Built-in) | Integrated transceiver, 8 Frequency Channels and 4 Groups with full RX features | |
| Sync voltage | 5 V (compatible with all cameras) | |
| Sync socket | 3.5 mm Jack | |
| Max. power consumption (230 V) | 140 W | 150 W (+during charge: 370 W) |
| Max. power consumption (115 V) | 170 W | 180 W (+during charge: 280 W) |
| Dimensions (with protective cap) | 19 x 14 x 19 cm | 26 x 14 x 19 cm |
| Weight | 0.9 kg (2 lb.) | 1.3 kg (2.8 lb.) 1.5 kg (3.3 lb.) |
| N° | 20485.1 | 20486.1 20487.1 |

D-Lite RX 2/4





elinchrom[®]



D-Lite ONE



D-Lite RX 2/4



7 630006 319344

This brochure may show images of products with accessories, which are not part of Sets or single units.
Elinchrom Set and single unit configurations may change without advise and they might be different in other countries.

Tolerances of specifications and components conform to IEC and CE standards. The listed values can differ due to tolerances in components, or measuring instruments. Technical data, subject to change. No guarantee for misprints.

Photo: Anoush Abrar www.anoushabrar.com